

Product Catalogue 2007



**When**

The leading international communication and security systems provider for professionals who depend on fast and reliable communication.

Communication

Verbal communication explaining the critical situation. It also includes signaling which triggers action.

Is Critical

Immediate contact without delay!

With over 100 years of experience, Zenitel continues to be an international market leader in the field of integrated communication, information and security solutions for professional user groups who depend on fast and reliable communications. Typically, these will be groups involved in the protection of life,

health, environment and tangible assets. One of the main strategies is to work closely together with a number of partners worldwide to market and distribute the solutions and products, and to provide the best possible customer service and technical support.

Our Products and Services

Our skilled engineers work on new products and enhancements to meet market demands. Zenitel ensures the communication solutions are based on the most advanced technologies capable of providing:

High degree of flexibility.

Hands free loud- or low speaking duplex operation to secure immediate communication.

Single-touch keys provide faster, error-free dialing and display shows features and subscriber directories.

Perform calls to local- and remote subscribers in a network, make group calls and public address announcements, conferencing and make external telephone calls.

Extended integration of different kinds of communication and alarm systems, CCTV, paging systems, etc.

Flexibility to utilize and upgrade existing systems and networks.

Increased strength to brand names. The business unit develops, markets and sells products produced by Zenitel as well as third party products.

Customized terminals for special purposes in all segments.

Highly skilled engineers are ready to provide the best service throughout the world.

The business unit shall secure the customers' investment, distribute products worldwide, focus on human capital and obtain growth.



TABLE OF CONTENTS

ASACOM SYSTEMS

ASA10107 system description & installation.....	5
ASA10105 system description & installation.....	6
Exchanges	7
Transformers.....	8
Line boards.....	8
Additional boards.....	9
Connection material.....	11

ASACOM Stations

Master stations.....	12
Industrial stations.....	13
Sub stations.....	13

ASACOM Accessories

Station accessories.....	15
--------------------------	----

Supplementary Products.....

18

ASACOM Spare Parts

Spare parts.....	19
------------------	----

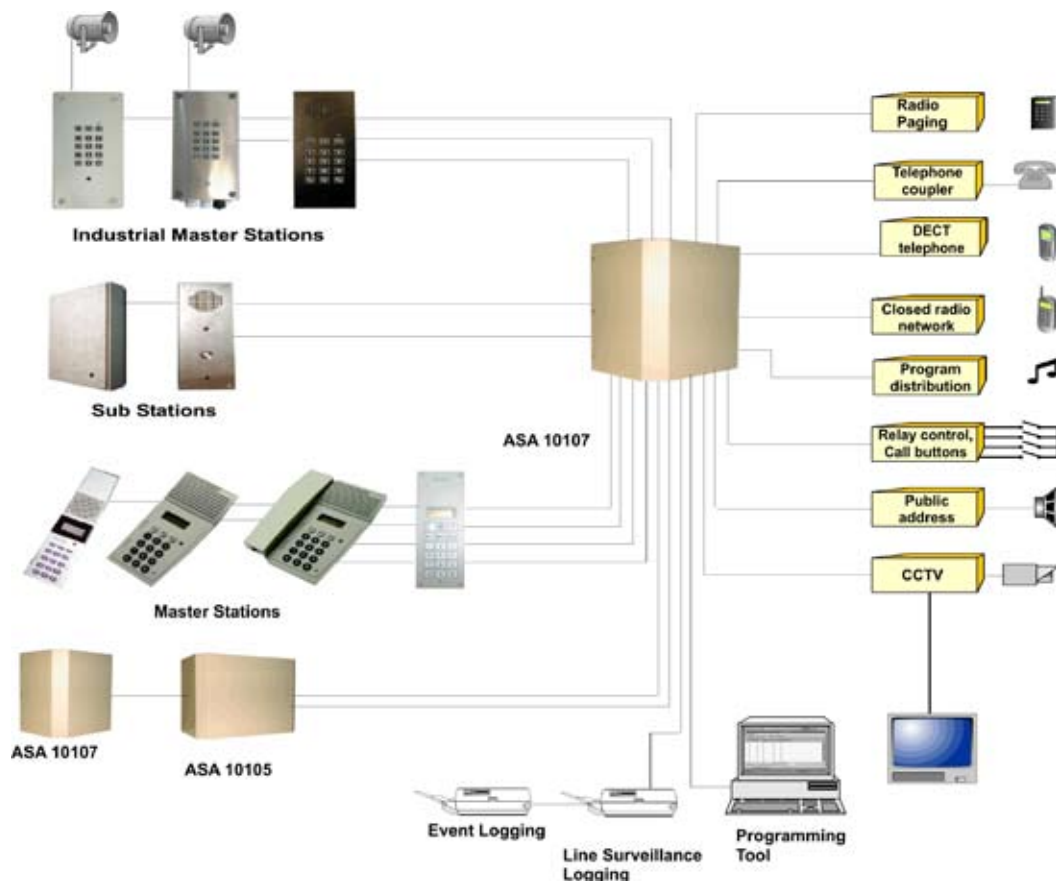
Highlights

- Compact wall mounted rack
- All digital system
- 2-wire star network
- Fully compatible with ASA10105 stations and boards
- High degree of integrated facilities
- Tie line possibilities

Description

The ASA10107 is the smallest modular microprocessor controlled intercom exchange in the ASACOM range, expandable from 8 to 96 extensions. The ASA 10107 is a fully digital intercom and information system using state-of-the-art technology. It's modular design in combination with a two-wire star network, makes it possible to expand the system whenever needed. The basic ASA 10107 is equipped for 16 digital extensions and 15 speech channels. In addition to the basic calling functions, the system offers a high degree of integrated facilities. The exchange cabinet houses a rack for up to eight printed boards and a power supply, the transformer is external. At delivery ASA10107 is equipped with three printed circuit boards, the processor board, the speech channel board and the line board, providing system expansion for up to five boards e.g. additional line boards, making it a 96 line-exchange. The ASA 10107 may also be equipped with boards in the ASACOM range, such as boards for ordinary telephones, interfaces to mobile radio, paging, etc. There is a large number of digital intercom stations for various environments and applications. Together, the exchange and the stations form a powerful and very flexible intercom and information system that handles the communication needs of any organisation, whether it be an office, industry, school, airport or hospital.

ASA 10107 Installation





Description

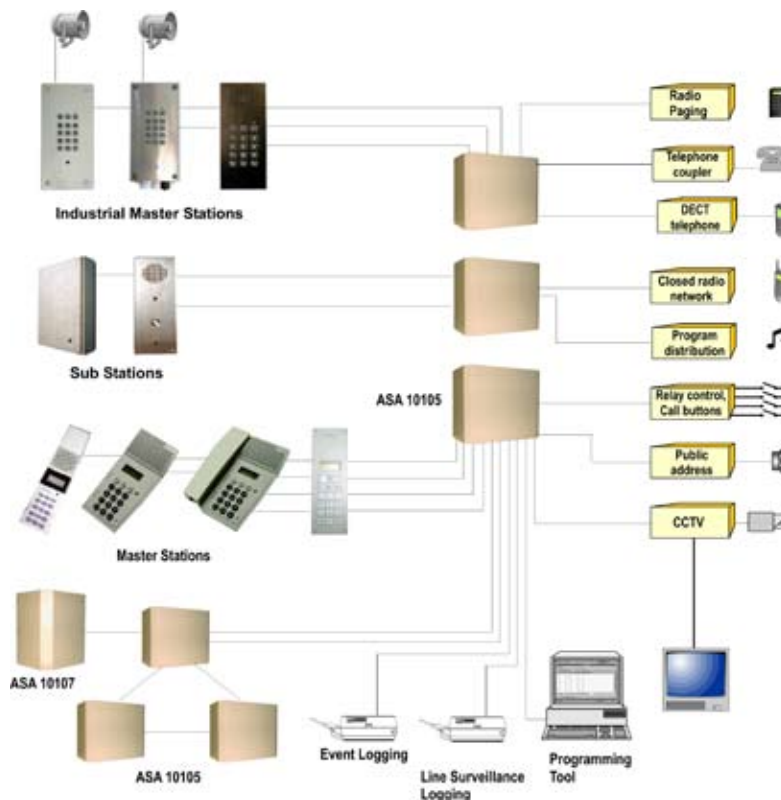
ASA 10105 is a modular microprocessor controlled intercom exchange in the ASACOM range, expandable from 8 to 4864 extensions. The ASACOM system is a fully digital intercom and information system using state-of-the-art technology. It's modular design in combination with a 2-wire star network makes it possible to expand the system when ever needed.

The system offers a high degree of integrated facilities. The complete basic exchange is a shelf with 14 PCB-slots, which makes it extremely easy to expand. With additional PCB's the basic unit can be equipped with 104 extensions and 15 speech channels, or there may be a free mix of line boards, speech channels and boards for extra facilities. The special architecture of the system modularity makes it possible to configure systems for up ro 4864 extensions. The exchange may also be equipped with boards in the ASACOM range, such as boards for ordinary telephones, interfaces to mobile radio, paging, etc.

There are a large number of digital intercom stations for various environments and applications. Together, the exchange and the stations form a powerful and very flexible intercom and information system that handles the communication needs af any organisation, whether it be an office, industry, school, airport or hospital.

Highlights

- All digital system
- 2-wire star network
- Modular build-up = easy to expand
- High degree of integrated facilities
- Fibre optic technology
- Multi-node system up to 4864 lines
- Tie line possibilities



Exchange

**ASA 10107, DIGITAL EXCHANGE****G10107****Basic System equipped for 16 extensions and 15 speech channels**

Complete system with Power Supply BMJ20601, Processor Board EXCP2, Speech Channel Board CCDX2 and one Digital Subscriber Board LIDI-3 for 16 extensions. Line Filter LFU-3 for max. 32 extensions and Mains Filter included as well as 2 pcs TSL 33100 cables for connection LIDI-3/LFU-3 and power cable for Power Supply. 5 free slot positions in system will give expansion possibility up to 96 extensions. Stations not included.

Dimensions(mm): W362 x H412 x D255

Weight Basic Equipment: 15.0 kg.

**Note:**

Do not forget to add a transformer to the ASA 10107 system.
See Transformers listed below.

**ASA 10105, DIGITAL EXCHANGE****G10105**

Basic Rack equipped for 16 extensions and 15 speech channels
Complete basic rack with Power Supply BMJ20601, Processor Board EXCP2, Speech Channel Board CCDX2 and one Digital Subscriber Board LIDI-3 for 16 extensions. Line Filter LFU-3 for max. 32 extensions and Mains Filter included as well as 2 pcs TSL 33100 cables for connection LIDI-3/LFU-3 and power cable for Power Supply. 11 free slot positions in rack will give expansion possibility up to 104 extension and 2 feature boards. By use of Expansion Rack (see below), system is expandable up to 304 extensions. Maximum 16 ASA 10105 systems can be interconnected by optical fibre loop. This will give a homogeneous multi node system for 4864 extensions and 60 speech channels. Stations not included.

Dimensions (mm): W509 x H475 x D336

Weight Basic Equipment 21.5 kg

**Note:**

Do not forget to add a transformer to the ASA 10105 Rack.
See Transformers listed below.

**2/BFL32002/2****94040****Expansion Rack for ASA 10105**

Complete expansion rack with Power Supply BMJ20601 and Mains Filter. Power cable for power supply and ribbon cable for connection to ASA 10105 Basic Rack are also included. 14 slot positions available for subscriber boards or feature boards.

Dimensions (mm): W509 x H475 x D336

Weight Basic Equipment 20.5 kg

Note:

Do not forget to add a transformer to the Expansion Rack.
See Transformers listed below.

Transformers



Mains Transformer 230/36V AC, SP 18754

95810

Transformer for ASA10105 and ASA10107.

Input voltage: 230 VAC

Output voltage: 36 VAC

Power consumption: 600 VA

Size(mm): 130W x 200H x 115D.

Weight: 7.7 kg.



Mains Transformer 110/36V AC, SP18755

95811

Transformer for ASA10105 and ASA10107.

Input voltage: 110 VAC

Output voltage: 36 VAC

Power consumption: 600 VA

Size(mm): 130W x 200H x 115D.

Weight: 7.7 kg

Line Boards



Digital Subscriber Line Board, LIDI-3

10003

The card can be set to provide 8, 10, 15 or 16 digital subscriber connections by means of jumper setting.

15 lines: Set as default. These 15 lines can be set-up from progr. station.

16 lines: Will give highest capacity, but the last line can only be reached with the G0020 progr. kit where the Windows PC set-up program ETC is used.

10 lines: Used if the LIDI-3 card is used to replace a 10 line LIDI-2 card. Termination equipment can then remain as is.

8 lines: Actual in small system. Only one termination cable is needed.

All subscriber connections suitable for display station types DEE531, DEE631, DER432, DER 434, The board plugs into any slot position 01-13.

Size(mm): 20W x 343H x 198D.

Weight: 0.5 kg



Analogue Subscriber Line Board, TLAI-6

10473

The card can be set to provide 8, 10, 15 or 16 digital for analogue 2-wire telephones. DTMF or pulse dialing.

15 lines: Set as default. These 15 lines can be set-up from progr. station.

16 lines: Will give highest capacity, but the last line can only be reached with the G0020 progr. kit where the Windows PC set-up program ETC is used.

10 lines: Used if the TLAI-6 card is used to replace a 10471 TLAI-5 line 10 card. Termination equipment can then remain as is.

8 lines: Used in small systems. Only one termination cable is needed.

The board plugs into any slot position 01-13.

Size(mm): 20W x 343H x 198D.

Weight: 0.5 kg

Installation cable type & distance for LIDI-3 and TLAI-6

Wire diameter	Max. distance LIDI-3	Max. distance TLAI-6
0.5 mm 24 AWG	1.5 Km 4,500 feet	5 km 17,000 feet

Additional Boards



Highway Link Board, HWLO

Board for interconnection in multi node systems. Used in conjunction with Twisted Pair Link Board OCL3/1 or Optical Link Boards OCL3/2, OCL3/3. Handles connection from external link channels on optical fibre / twisted pair board into exchange units PCM-channels. The board plugs into slot position 01 or 02.

Size(mm): 20W x 343H x 198D.

Weight: 0.6 kg

10090



Twisted Pair Link Board, OCL3/1

Board for short distance interconnection in multi node systems. Used in conjunction with High Way Link Board, HWLO. Equipped with one input / output port for twisted pair, max distance between exchange units 100 m. Also equipped with by-pass relays to avoid loop break-down in case of power failure or exchange unit shot down. Alarm outputs via optocouplers available on board front connector. Board can be used as repeater for longer distances.

The board plugs into slot position 01 or 02.

Size(mm): 20W x 343H x 198D.

Weight: 0.35 kg

10102



Optical Link Board, OCL3/2

Board for optical fibre interconnection in multi node systems. Used in conjunction with High Way Link Board, HWLO. Equipped with one input / output port for twisted pair, max distance between exchange units 100 m, and one optical input / output port for Mono mode fibre with SC-connector. Maximum distance between exchange units with Mono Mode fibre is 30 km.

Alarm outputs via optocouplers and control signals for external optical by-pass relay available on board front connector. Built-in by-pass relay for twisted pair connection. Board can be used as repeater for longer distances.

Optical wavelength: 1300nm. Optical budget: 19dB.

The board plugs into slot position 01 or 02.

Size(mm): 20W x 343H x 198D.

Weight: 0.35 kg

10104

Additional Boards cont.



Optical Link Board, OCL3/3

10106

Board for optical fibre interconnection in multi node systems. Used in conjunction with High Way Link Board, HWLO. Equipped with one input / output port for twisted pair , max distance between exchange units 100 m, and two optical input / output ports for Mono mode fibre with SC-connectors. Maximum distance between exchange units with Mono Mode fibre is 30 km. Alarm outputs via optocouplers and control signals for external optical by-pass relay available on board front connector. Built-in by-pass relay for twisted pair connection. Board can be used as repeater for longer distances.

Optical wavelength: 1300nm. Optical budget: 19dB.

The board plugs into slot position 01 or 02.

Size(mm): 20W x 343H x 198D.

Weight: 0.35kg



Connection Board, HWLO-OCL

94122

Board for connection of data and clock signals between High Way Link Board, HWLO and Optical/Twisted Pair Link Boards OCL3. Plugs into board front connectors HWLO and OCL3/1 , OCL3/2 or OCL3/3.

Size(mm): 40W x 25H x 13D.

Weight: 0.01 kg



External Traffic Control Board, ETCB

10350

4 channel analogue multi function board for: Radio Paging, Public Address, Local Tie-Line, Background Music, Central Information, Alarm and Break Signals, Mobile Radio, Conference, PABX Interface, Emergency Call, Watchmans Feature and Time Info. By use of special software prom's and/or PC-program's board can be used for: Customer Programming (ECT), Alarm Call Registration(ACR), Acoustical Line Test(Echo-Guard), Line Supervision(LidiGuard), and Event Logging. The 4 analogue channels can by on-board jumpers be individually setup for 2- , 4-, 6- or 8-wire connections depending of feature wanted. Board has DTMF receiver/transmitter, line voltage detector, ringing voltage detector and tone detector. 4 RS232 serial communication ports and 4 current loop ports are available on board front connector. Setup and programming of ETCB features are made from exchange programming station. Backup/Restore backup possibility of programmed data can be made from PC connected to serial communication port.

The board plugs into slot position 01-13.

Size(mm): 20W x 343H x 198D.

Weight: 0.5 kg



External Traffic Control Board, ETCB2

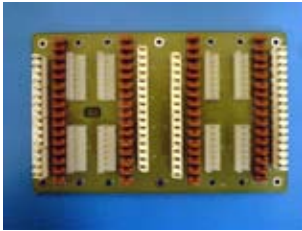
10351

2 channel analogue multi function board. Same features as for ETCB. Please see above.

Size(mm): 20W x 343H x 198D.

Weight: 0.4 kg

Connection material for LIDI-3, TLAI-6 and ETCB Boards



Line Filter Unit, LFU-3

Line filter board for 32 extensions. Board is to be mounted on the sides of exchange cabinet.

Connections for subscriber board cables. Connections to the in-house wiring or MDF are realized with KRONE LSA terminals. Board is suitable for LIDI-3, TLAI-6, ETCB, and ETCB2.

Size(mm): . 178W x 112H x 15D.

Weight: 0,2 kg

94046

Note:

Do not forget to add one cable type TSL 33100 for each group of 8 extensions when ordered.



Connection Cable for Subscriber Board, TSL 33100

94113

Line cable for connection of 8 LIDI-3, TLAI-6 extensions to line filter board LFU-3.

Length: 0,7 m.

94113

Connection Cable for ETCB Board, TSE 30100

Cable for connection of one ETCB or ETCB2 board to line filter board LFU-3.

Length: 0,7 m

94120

Connection material for OCL3/2 and OCL3/3



Optical Fibre Cable, TSR 30301

Optical mono mode fibre 10/125 with single SC-connector.

*Length: 10 m**

94166



Optical Fibre Cable, TSR 30302

Optical mono mode fibre 10/125 with SC - SC connectors.

For short distance connections OCL3/2/3 to OCL3/2/3 or to patch panel.

*Length: 5 m**

94167



Optical Fibre Cable, TSR 30312

Optical mono mode fibre 10/125 with SC - ST connectors.

For short distance connections OCL3/2/3 to OCL1/OCL2 or to patch panel.

*Length: 5 m**

94168



Optical Fibre Cable, TSR 30322

Optical mono mode fibre 10/125 with SC - FC connectors.

For short distance connections OCL3/2/3 to OCL1/OCL2 or to patch panel.

*Length: 5 m**

94169

* Other lengths for fibre cables on request

Stations

**Digital Master Station DEE 53110**

11073

Loud speaking / Soft speaking master station. Station equipped with 2*12 characters alphanumeric backlight display and relay driver output for control of door lock, CCTV etc. Prepared for Headset and External key input programmable for timed delay. Station features as volume control and station modes (Direct In, Privacy, Information, Save-In-Call-Me-Queue and Monitoring) are all programmable from station function keys and special station programming modes. Built-in or external clock function for Wake-Up or Alert alarm.

NOTE! Can only be connected to LIDI-3 subscriber board.

Colour: White/Grey

Size(mm): 75W x 270H x 120D.

Weight: 0.4 kg

**Digital Master Station DEE 63101**

11475

Loud speaking Master station without handset. Station equipped with 2*12 characters alphanumeric backlight display and relay driver output for control of door lock, CCTV etc. Prepared for Handset, Headset and External key input programmable for timed delay. Station features as volume control and station modes (Direct In, Privacy, Information, Save-In-Call-Me-Queue and Monitoring) are all programmable from station function keys and special station programming modes. Built-in or external clock function for Wake-Up or Alert alarm.

NOTE! Can only be connected to LIDI-3 subscriber board.

Colour: Light Grey

Size (mm): 102W x 222H x 55D.

Weight: 0.4 kg

**Digital Master Station DEE 63102**

11485

Loud speaking Master station with handset. Station equipped with 2*12 characters alphanumeric backlight display and relay driver output for control of door lock, CCTV etc. Prepared for Headset and External key input programmable for timed delay. Station features as volume control and station modes (Direct In, Privacy, Information, Save-In-Call-Me-Queue and Monitoring) are all programmable from station function keys and special station programming modes. Built-in or external clock function for Wake-Up or Alert alarm.

NOTE! Can only be connected to LIDI-3 subscriber board.

Colour: Light Grey

Size (mm): 160W x 222H x 55D.

Weight: 0.65 kg

**Digital Master Station DER 43312**

11603

Loud speaking master station with plastic foil front for flush or wall mounting in separate box. Station equipped with 2*12 characters alphanumeric backlight display and relay driver output for control of door lock, CCTV etc. Prepared for Handset, Headset and External key input programmable for timed delay. Station features as volume control and station modes (Direct In, Privacy, Information, Save-In-Call-Me-Queue and Monitoring) are all programmable from station function keys and special station programming modes. Built-in or external clock function for Wake-Up or Alert alarm. Foil front easy to clean and resistant to most liquids.

NOTE! Can only be connected to LIDI-3 subscriber board.

Size(mm): 90W x 270H x 45D.

Weight: 0.5 kg

Stations

**Industrial Master Station DER 43410**

11513

Industrial master station IP44 without display and without internal speaker. Station is protected by a lacquered steel box with back lighted waterproof rubber keypad. Equipped with output for control of door lock, CCTV etc. Handset/Headset outlet and External key input programmable for timed delay. External speaker must be ordered separately.

NOTE! Can only be connected to LIDI-3 subscriber board.

Colour: Beige

Size(mm): 150W x 300H x 85D.

Weight: 2.4 kg

**Industrial Master Station DER 43420**

11523

Industrial master station IP56 without display and without internal speaker. Station is enclosed in a stainless steel box with back lighted waterproof rubber keypad and with Handset /Headset outlet. Equipped with relay driver output for control of door lock , CCTV etc. Prepared for External key input programmable for timed delay. External speaker must be ordered separately.

NOTE! Can only be connected to LIDI-3 subscriber board.

Size(mm): 150W x 340H x 85D.

Weight: 2.4 kg

**Industrial Master Station DER 43430**

11533

Industrial master station without display for flush mounting or wall mounting in separate box. Station is equipped with back lighted waterproof rubber keypad and relay driver output for control of door lock, CCTV etc. Prepared for Handset, Headset, and External key input programmable for timed delay.

NOTE! Can only be connected to LIDI-3 subscriber board.

Colour: Black

Size(mm): 90W x 270H x 45D.

Weight: 0.5 kg

**Sub Station DER 43201**

11053

Sub station without display for flush or wall mounting in separate box. Stainless steel front. Station equipped with one multi function key for Call, Call answer and Release. Station also equipped with relay driver output for control of door lock, CCTV etc. Prepared for Handset, Headset . Call key programmable for timed delay.

NOTE! Can only be connected to LIDI-3 subscriber board.

Size(mm): 90W x 270H x 45D.

Weight: 0.5 kg

**Sub Station DEF 43103**

94213

Sub station in wooden frame for wall mounting.

Station equipped with loudspeaker, microphone and LED

NOTE! Can only be connected to LIDI-3 subscriber board.

Colour: White

Size(mm): 10W x 230H x 260D.

Weight: 0.5 kg

Stations

Explosion Proof Analogue Telephone for Zone 1, 5100/4T

13050

Ex. proof non-loudspeaking telephone for wall mounting in hazardous areas. IP66.

Protection: Eex eq ib IIC T6

Colour: Black

Size(mm): 245W x 380H x 150D.

Weight: 5.3 kg

Explosion Proof Analogue Telephone for Zone 0, 5239/1000

EX-5239

On request.

EX 5241/1000 Exi

EX-5241

On request. Must be included when 5239/1000 ordered.



LIDI-3 Station Board

94017

Consists of Main Board for DER432, DER433 without display.

Also suitable for local applications.

NOTE! Can only be connected to LIDI-3 subscriber board.

Board Size(mm): 72W x 120H x 13D.



Substation Volume Control Card

94102

This card is needed when 94017 is used as a substation (station with 1 call button).

Display for station board on request.

Accessories



Headset MT 53H79A, 10m Cord

Suitable for Industrial Master Station DER 43410 and DER 4120.

Colour: Black

Weight: 0.5 kg

16032



Wall Holder 591170

Wall holder in transparent plastic. For station type DEE 50110 and DEE 53110.

Size(mm): 84W x 105H x 90D.

Weight: 0.07 kg

11110



Box for Flush Mounting, NPH 80204

Flush mounting box for Master Stations DER 43312 , DER 41312 and Sub Stations DER 43201 and DER 41201.

NOTE! Can not be used for Master Station DER 43430.

Colour: Light grey

Size(mm): 84W x 264H x 58D.

Weight: 0.7 kg

94230



Box for Surface Mounting, 591391/2

Surface mounting box for Master Stations DER 43312 , DER 41312, DER 43430 and Sub Stations DER 43201 and DER 41201.

Colour: Light grey

Size(mm): 108W x 280H x 75D.

Weight: 0.5 kg

94225

Accessories

Cord for DEE stations, Modular-Modular, A50110 4010 **12270**

Station cord with modular RJ11 plugs.

Colour: Black

Length: 2 metres

Cord for DEE stations, Modular-Hirschmann, A50110 4001 **12280**

Station cord with modular RJ11 and 6-pole Hirschmann plug.

Colour: Black

Length: 2 metres

Cord for DEE stations, Modular-Modular. A50110 4010 **12260**
Station cord with modular RJ12 plug.

Colour: Black

Length: 2 metres



Mounting Bracket A61102 7010 for panel mount DEE 631, DEE611 **11440**

Complete kit for panel mounting.

Weight: 0.1 kg

Wall Mounting Bracket DEE61199 for DEE 631 and DEE611 **11490**

Weight: 0.01 kg



Handset DEE 63103 **11495**

Complete handset for master station DEE 63101.

Size (mm): 58W(105W) x 209H x 63D

Colour: Light Grey

Weight: 0.25 kg

Accessories



Wall Socket TEL1 for Modular Station Cord

12025



Horn Speaker 15 W 8 ohm, VML 1508

16131

General purpose horn speaker. IP65.

Colour: Grey

Size(mm): 250W x 145H x 270D.

Weight: 1.35 kg



Horn Speaker 15 W 20 ohm, VML 1520

16132

General purpose horn speaker. IP65.

Colour: Grey

Size(mm): 250W x 145H x 270D.

Weight: 1.35 kg



Horn Speaker 100V, VML 15T

42231

General purpose horn speaker. IP65. To be used together with 100V line amplifier.

Colour: Grey

Size(mm): 250W x 145H x 298D.

Weight: 1.9 kg

Amplifier Box 30W, 32-1176

11560

30W Amplifier housed in IP66 steel box for 24 VDC power feed.

Colour: Beige

Size(mm): 300W x 200H x 120D.

Weight: 3.5 kg

Amplifier Box 30W, 32-1177

11570

30W Amplifier housed in IP66 steel box for 110-240 VAC power feed.

Colour: Beige

Size(mm): 300W x 200H x 120D.

Weight: 3.5 kg

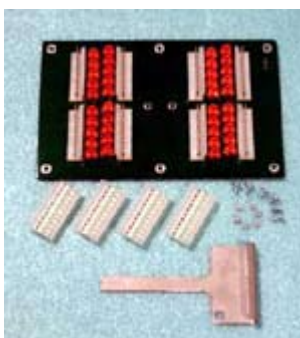


Connection Cable for Subscriber Board, TSL 30100

94115

Line cable for connection of 10 extensions LIDI or TLAI to line filter board LFU.

Length: 0.7 m



Line Filter Board LFU, ROA 2195050

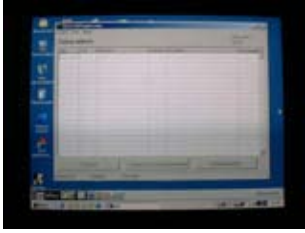
94095

Line filter board for 20 extensions. Board is to be mounted on the sides of exchange cabinet. Connections for subscriber board cables and connections to the in-house wiring or MDF are realized with MOLEX terminals. Board is suitable for LIDI, TLAI, ETCB, and ETCB2. Board is delivered with 4pcs MOLEX headers, screws, washers and tool for wire mounting.

Size(mm): . 178W x 112H x 15D.

Weight: 0.1kg

Supplementary Products



Alarm Call Registration, ACR

94460

ACR is Windows TM based PC software for handling of elevator alarm calls. Complete elevator supervising system consist of Alarm Call Handling, Line Supervision and Acoustic Line Test. All incoming alarms and result of line and acoustic tests are shown on PC and stored in log files. From PC incoming alarms can be acknowledged and speech connection from operator station to alarming stations can be set up. ACR can be used in ASA 10107 as well as in a ASA 10105 multi node system.

Complete ACR package consists of:

- ACR PC software
- One standard 4 channel ETCB board for Alarm call and Acoustic line test handling
- One ETCB2 board equipped with Line Supervision software (Lidi Guard)
- One RS232/RS485 Converter
- Cables
- Documentation

Note! Current version can handle line cards with maximum 10 lines.
See Technical Bulletin 2006-04-07.

Note! Exchange must be equipped with speech channel board CCDX2



ECT Programming kit for ASA

G0020

Includes:

- Windows based PC programme
- ETCB2 Board, used as interface to exchange
- RS232/RS485 Converter
- Cable PC- Converter
- Manual

PC-programme can be run under Windows 95/98/2000/NT/XP



Spare parts

**Power Supply, BMJ 20601****10170**

Power supply for ASA 10105 and ASA 10107. Power supply have a combined input for 36 VAC or 48 VDC voltage and connectors for External 48 VDC input that can be used as back-up power feed for OCL3 boards. Also available on front connector is a 48 VDC output for connection of external equipment.

Input voltage 36V AC or 48V DC.

Output voltages: 5 VDC 14 A

48 VDC 6A

External output: 48 VDC Max 500 mA

Size(mm): 68W x 344H x 198D.

Weight: 2.4 kg.

**Digital Subscriber Line Board LIDI2, ROF 157 9002/2****10000**

Each board provides 10 digital 2 wire subscriber connections. All subscriber connections suitable for stations types DEE 501, DEE 611, DER 412, DER 413 and DER 414. The board plugs into any slot position 01-13.

Size(mm): 20W x 343H x 198D.

Weight: 0.5 kg

**Exchange Central Processor Board, EXCP2****10140**

Central processor board for one exchange unit. Controls all communication and services for all equipped boards in the exchange. Equipped with non-volatile memory, EEPROM, for customer specific programming and EPROM for system program. The board plugs into slot position 00.

Size(mm): 20W x 343H x 198D.

Weight: 0.6 kg

**Speech Channel Board, CCDX2****10360**

Board for voice switched duplex conversation between loudspeaking extensions. Board provides 16 channels controlled by two Digital Signal Processors. Can handle 15 simultaneously loudspeaking calls. One channel reserved for register tone generation. One RS232 serial communication port for terminal connection used for hardware testing, duplex parameter programming, tone programming and software debug. The board plugs into any slot position 01-13.

Size(mm): 20W x 343 x 198D.

Weight: 0.5 kg

Spare parts



DIGIBOX Relay Unit , 591 614/1

15060

Interface for line affiliated extra facilities. Can be connected single on LIDI, LIDI2 line or in parallel with station. Relay change-over contact output and audio output 35mV/1200ohm.

Note: Can only be connected to LIDI-2 Subscriber Board.

Size(mm): 140W x 190H x 85D.

Weight: 0.5 kg



Handset DEE 61103/1

94195

Complete handset with cradle for master station DEE 61101/1.

Colour: White

Size(mm): 58W (105W)x 209H x 63D.

Weight: 0.25 kg



Handset DEE 61103/2

94200

Complete handset with cradle for master station DEE 61101/2.

Colour: Dark Grey

Size(mm): 58W(105W) x 209H x 63D.



Headset MT7HG , 1,5m Cord

16020

Suitable for DER 41410 and DER 4120

Colour: Black

Weight: 0.5 kg



Headset MT7HG , 10m Cord

16022

Suitable for DER 41410 and DER 4120.

Colour: Black

Weight: 0.7 kg

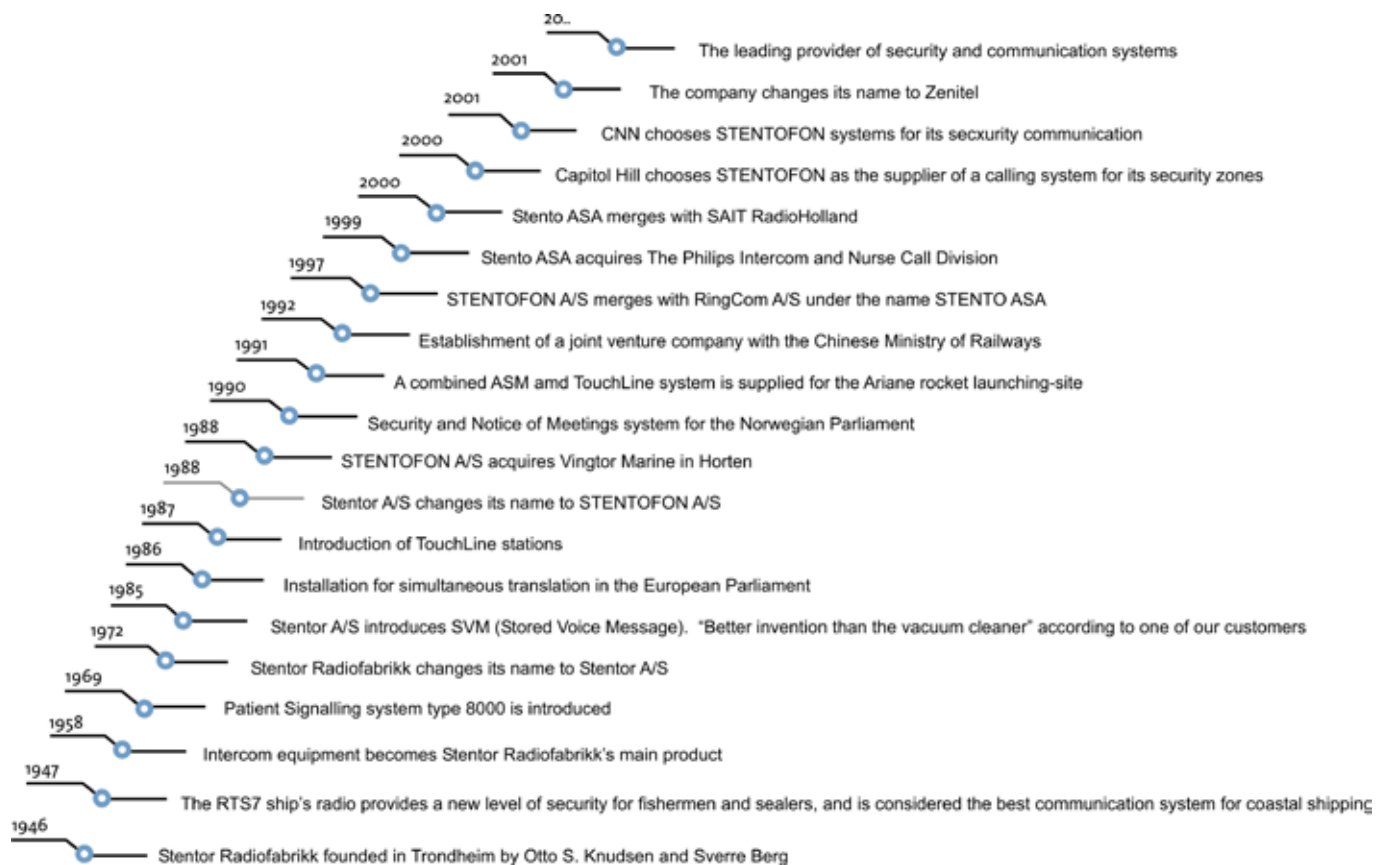
Three inventive Norwegian companies have merged into a global market player for internal communication systems

Shortly after World War II and independently of each other, three enterprising Norwegians started the development, production and marketing of internal communication systems. Gustav A. Ring (Ring-Master), Otto S. Knudsen (STENTOFON) and Max Manus (M100) put all their resources into the production of simple communication systems and were soon causing a sensation in the intercom world. Tough competition between them inspired each of them to continuously develop new systems, features and solutions for an ever-increasing number of market segments and applications. In 1997 Ring-Master and STENTOFON merged to become Stento ASA. The M100 system produced and marketed by Philips was acquired in 1999. This combined the three strongest and longest-established Norwegian companies in the field of internal communication.

Stento ASA merged with SAIT Radio Holland in May 2000. Then, in December 2001 the company changed its name to Zenitel.

From life-saving operations at sea to security and communication in a world perspective

In 1946 a man by the name of Otto S. Knudsen began producing life saving marine radios in Trondheim, Norway, leading to the production of radio sets, car radios and eventually intercom systems. This was the start of a company gaining international significance and launching ground-breaking innovations. Production of intercom systems began as early as 1946 but did not pick up speed until 1960 with the launch of the ST30 intercom system. This was followed by the advanced KV and ECS duplex intercom systems. Export contacts were being established with a number of European countries, and offices were opening abroad including Denmark, Sweden, Germany, France, USA, Great Britain, China and Australia. The first Pamex models were released in the 1970s and intercom development went into overdrive in the early 80's with the micro-processor. The primary product being manufactured during this time was the Pamex MPC that had much success until it was superseded by the TouchLine system. The latest STENTOFON system is the digital communications system AlphaCom used in a variety of applications around the world.



Web: www.zenitel.com
E-mail: info@zenitel.com

